

## UNIQUE MODULARITY

The universal cage-to-plate “snap-in” design enables one-click assembly, allowing for:

- **Intra-operative** construct assembly
- Creation of an **indication-specific** interbody fusion device



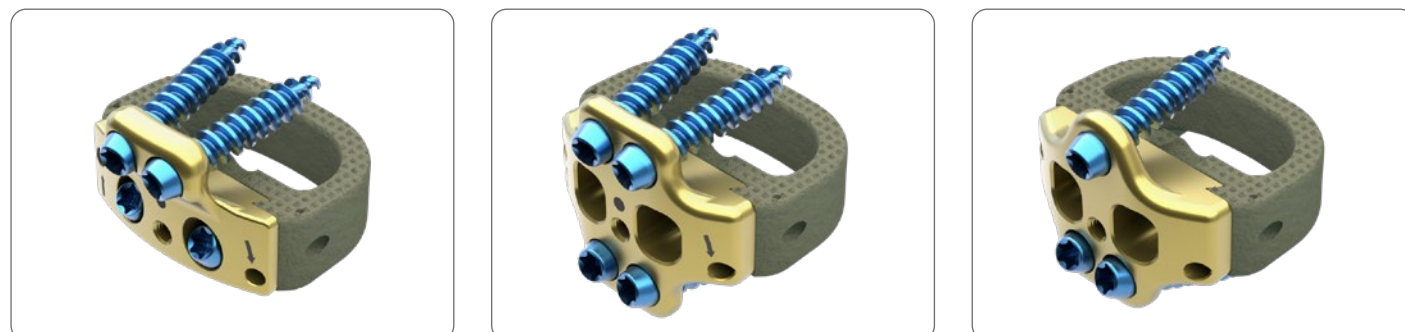
## MULTIPLE CONFIGURATIONS - FREEDOM OF CHOICE

**ANTERIOR STAND-ALONE SOLUTIONS** to address diverse patient anatomies and surgical needs.



### FLUSH

No anterior profile, **minimum soft-tissue impact**, reduced irritation<sup>[3]</sup>



### HYBRID

Designed to provide **cranial stability** and a caudal flush profile

### LONG

Designed to provide **stability** in extension and torsion

### L5-S1

**Flexible design** for the iliac artery bifurcation

**References:** [1] Data on file Medacta: mechanical test. [2] H.M. Frost, Wolff's Law and bone's structural adaptations to mechanical usage: an overview for clinicians, Angled Ortho 1994. [3] Outcomes and Spinopelvic Changes After Anterior Lumbar Interbody Fusion With a Novel Interbody Fusion Device: A Retrospective Study. Ankit Hirpara, Christina Koshak, Eric Marty, Christopher Gallus and Christopher Kleck. International Journal of Spine Surgery August 2024.

All trademarks and registered trademarks are the property of their respective owners.

This document is intended for the US market.

For all indications, contraindications, warnings, precautions, and potential adverse effects of the product presented, see the instructions for use or contact your local representative. For additional product information, visit [www.medacta.com](http://www.medacta.com).



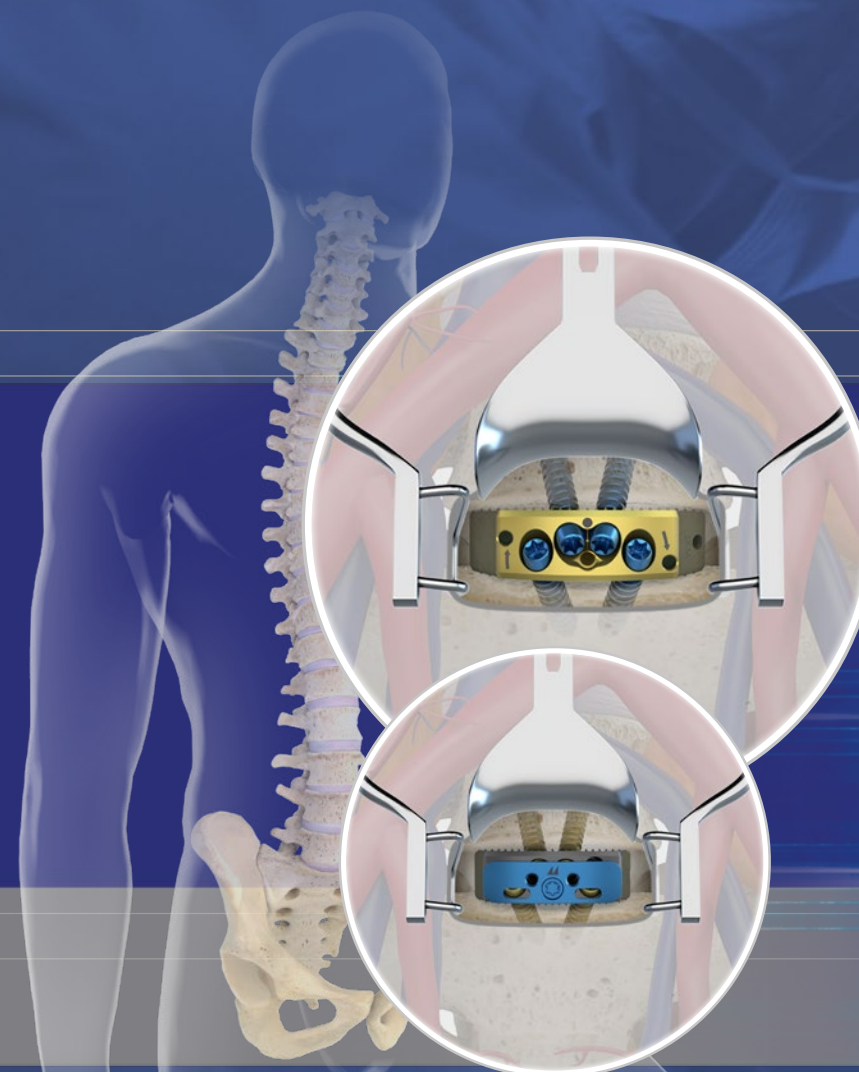
**Medacta International**  
Strada Regina, 34 - 6874 Castel San Pietro - Switzerland  
Phone +41 91 696 60 60 - Fax +41 91 696 60 66  
Info@medacta.ch - [www.medacta.com](http://www.medacta.com)

**Medacta USA**  
6640 Carothers Pkwy - Franklin, TN 37067  
Phone +1 866 830 1063 / +1 615 622 4715 - Fax +1 312 896 9138  
info@medacta.us.com

**MectaLIF<sup>®</sup> Brochure**  
99.44as.11US  
rev.04  
Last update: May 2025

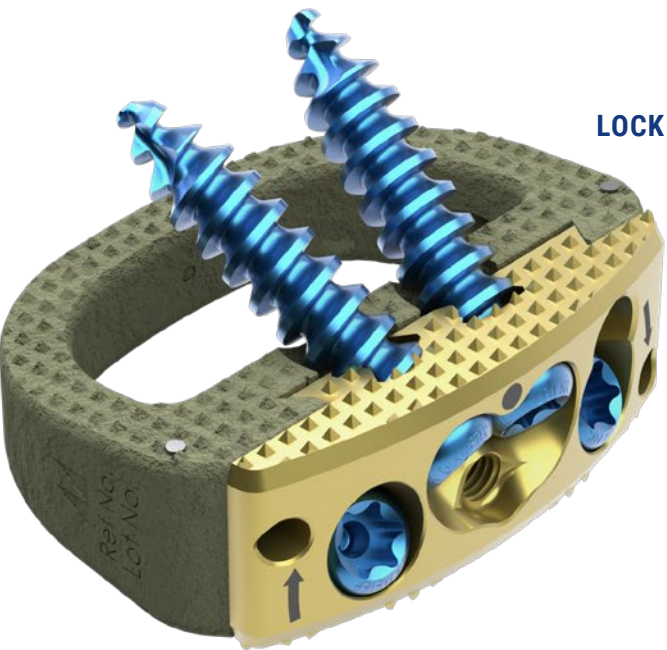


Digital format only. Unsuitable for printing.





MectaLIF Anterior fusion device is a **modular solution** for lumbar interbody fusion. The **variety** of plates and screws allows the surgeon to **tailor the implant** to specific patient anatomy and treatment needs.



## ANGULAR STABILITY

- **Exclusive** divergent & convergent **screws**
- In-situ system **stability**<sup>[1]</sup>
- Screw **pull-out strength**<sup>[1]</sup>

## ENHANCED BONE GRAFT VOLUME

**Large** central **bone graft** area may help to accelerate the occurrence of fusion through the implant.

## TIPEEK TECHNOLOGY

The MectaLIF Anterior system harnesses Medacta's unique titanium coating technology.

## SECURE LOCKING SYSTEM

### RIGID FIXATION - LOCK

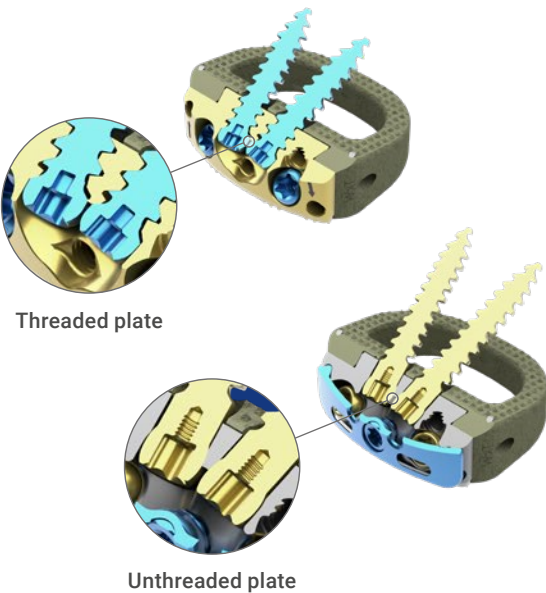
Controlled torque means securely locked screws with no need for a separate **anti-migration system**.

- Threaded titanium plate helps **avoid cross threading**
- **Horizontal screw** angle reduces the bending moments, which is intended to prevent screw back out

### VARIABLE FIXATION - LAG

Lag screws with an unthreaded plate configuration allow micromotion and proper load distribution according to Wolff's law.<sup>[2]</sup>

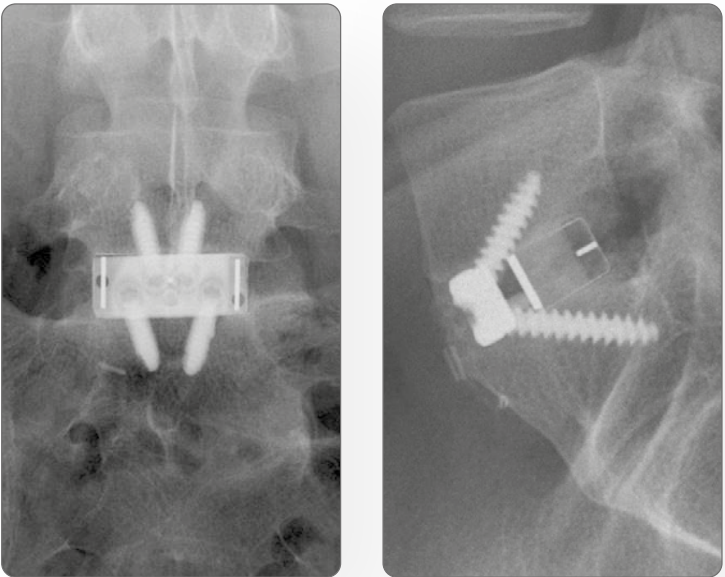
- Physiological-like support that may lead to a **stable configuration**
- Easy insertion of the central antibackout plate to safely secure the lag screws



## EFFECTIVE CORRECTION OF SPINOPELVIC PARAMETERS

MectaLIF Anterior fusion devices are an effective option for correcting spinopelvic alignment. Key potential benefits include:

- **Correction of Lumbar Lordosis**  
Improves lumbar lordosis and corrects pelvic incidence-lumbar lordosis mismatch.<sup>[3]</sup>
- **Low Complications**  
Rare cases of subsidence, nonunion, or migration ensure safety and reliability.<sup>[3]</sup>
- **Adaptability**  
The device's modular design allows the surgeon to adjust the implant according to the patient's anatomy. This can help maximize the contact area on the vertebral bodies to reduce the risk of subsidence.<sup>[3]</sup>
- **Clinical Relevance**  
Can achieve correction with minimal medical and surgical complications.<sup>[3]</sup>



## VERSATILE OFFERING

MectaLIF Anterior cages are available in numerous implant heights, footprints, and lordoses, in order to:

- Offer anterior / posterior support
- Provide patients with the **appropriate** anatomical **fit**
- Accommodate the **surgeon's practice**

